



Handheld barcode scanner



H13



- Symbologies: 1D
- Laser: LASER 630-650nm
- Reading accuracy: ≥ 4 mil
- Dimensions: 170*66*97mm
- Depth of field range: 10mm-320mm (EAN-13, 13mil 13 Byte)



H10



- Symbologies: 1D
- Resolution: 1500 CCD
- Reading accuracy: ≥ 4 mil
- Dimensions: 160*95*65mm
- Depth of field range: 55mm-450mm (EAN-13, 13mil 13 Byte)



H18-65



- Symbologies: 1D
- Resolution: 2500 CCD
- Reading accuracy: ≥ 3 mil
- Dimensions: 160*95*65mm
- Depth of field range: 60-600mm (EAN-13, 13mil 13 Byte)



H41/W41



- Symbologies: 1D&2D
- Resolution: 640*480
- Reading accuracy: ≥ 5 mil
- Dimensions: 160*95*65mm
- Depth of field range: 50-310mm (EAN-13, 13mil 13 Byte)
- Wire or Wireless



H30/W30



- Symbologies: 1D&2D
- Resolution: 640*480
- Reading accuracy: ≥ 5 mil
- Dimensions: 170*67*93mm
- Depth of field range: 45-269mm (EAN-13, 13mil 13 Byte)
- Wire or Wireless



H43/W43



- Symbologies: 1D&2D
- Resolution: 640*480
- Reading accuracy: ≥ 5 mil
- Dimensions: 177*83.5*64mm
- Depth of field range: 50-310mm (EAN-13, 13mil 13 Byte)
- Wire or Wireless

Handheld barcode scanner



H48/W48-HHD



- Symbologies: 1D&2D
- Resolution: 1280*800
- Reading accuracy: $\geq 3.3\text{mil}$
- Dimensions: 160* 95 * 65mm
- Depth of field range: 90-230mm (EAN-13,5mil)
- Wire or Wireless
- Light industry



H48/W48-HD



- Symbologies: 1D&2D
- Resolution: 640*480
- $\geq 3.3\text{mil}$
- Dimensions: 160* 95 * 65mm
- Depth of field range: 30-290mm (EAN-13,13.3mil)
- Wire or Wireless
- Light industry

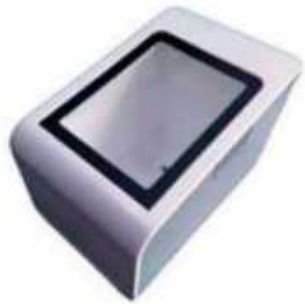


W50/H50



- Symbologies: 1D&2D
- Resolution: 1080*960
- Reading accuracy: $\geq 3\text{mil}$
- Dimensions: 160* 95 * 65mm
- Depth of field range: 60-400mm (EAN-13,13mil 13 Byte)
- Wire or Wireless
- Light industry

Code scanning box



B21-00



- Symbologies: 1D&2D
- Resolution: 640*480
- Dimensions: 120*82*82mm
- Mobile payment: 20-145mm
- Field Angle: 68°(H), 51° (V)
- Data Interface: USB HID-KBW
- Built-in buzzer



B25



- Symbologies: 1D&2D
- Resolution: 640*480
- Dimensions: 112*69*98mm
- Depth of field range: 0-110mm (QR 10mil)
- Field Angle: 68°(H), 51° (V)
- Data Interface: USB HID-KBW
- Built-in buzzer



B21-20



- Symbologies: 1D&2D
- Resolution: 640*480
- Dimensions: 83*80*80mm
- Mobile payment: 20-145mm
- Field Angle: 42°(H), 31° (V)
- Data Interface: USB HID-KBW
- Built-in buzzer

Ring Scanner



AI1510

- Symbologies: 1D&2D
- Memory: FLASH/16MB
- Dimensions: 50*35*18mm
- Expand storage: Support TF card (maximum 256G)
- Distance: 100m (open)
- Glove wearing equipment



R45

- Symbologies: 1D&2D
- Resolution: 640*480
- Dimensions: 52*36.5*46.5mm
- Depth of field range: 60-320mm (EAN-13, 13mil 13 Byte)
- Distance: 100m (open)
- 20000 strip EAN13
- Wearable devices



R40-M1

- Symbologies: 1D&2D
- Resolution: 640*480
- Dimensions: 52.5*36.5*46.5mm
- Depth of field range: 60-350mm (EAN-13, 13mil 13 Byte)
- Distance: 100m (open)
- 20000 strip EAN13
- Wearable devices



R42

- Symbologies: 1D&2D
- Resolution: 640*480
- Dimensions: 52.5*36.5*46.5mm
- Depth of field range: 50-300mm (ENA-13,13mil)
- Distance: 100m (open)
- 20000 strip EAN13
- Wearable devices



AI1500-SC

- Symbologies: 1D&2D
- Reading Rate: 106K/Bit
- Reading Time: <100mS
- Communication: Bluetooth/2.4G
- Distance: 20mm-60mm (depend on card type)
- Charge Voltage: 5V
- Weight: 50G (product) /150G (package)

Fixed barcode scanner



F40-11



- Symbologies: 1D&2D
- Resolution: 640*480
- Dimensions: 41.2* 47.8 * 21.5mm
- Depth of field range: 45-269mm (EAN-13,13mil 13 Byte)
- Aiming: Red LED
- Illumination: White LED
- Data Interface:USB, or RS232



F40-22



- Symbologies: 1D&2D
- Resolution: 640*480
- Dimensions: 41.4* 50 * 22.2mm
- Depth of field range: 50-310mm (EAN-13,13mil 13 Byte)
- Aiming: Red LED
- Illumination: White LED
- Data Interface:USB, or RS232



F41-70P



- Symbologies: 1D&2D
- Resolution: 1280*800
- Dimensions: 37* 48.5 * 23mm
- Depth of field range: 50-720mm (EAN-13,13mil 13 Byte)
- LED Aiming: laser
- Illumination: White LED
- Data Interface:USB, or RS232



F41-ER



- Symbologies: 1D&2D
- Resolution: 640*480
- Dimensions: 37* 48.5 * 23mm
- Depth of field range: 105-680mm (EAN-13,13mil 13 Byte)
- LED Aiming: laser
- Illumination: White LED
- Data Interface:USB, or RS232



F43



- Symbologies: 1D&2D
- Resolution: 1280*800
- Dimensions: 41.5* 49.5 * 24.5mm
- Depth of field range: 55-350mm (EAN-13,13mil 13 Byte)
- LED Aiming: laser
- Illumination: Red LED
- Data Interface:USB, or RS232



F45-21



- Symbologies: 1D&2D
- Resolution: 640*480
- Dimensions: 78.4*67.5 * 53.2mm
- Depth of field range: 15-100mm (EAN-13,13mil 13 Byte)
- Illumination: White LED
- Data Interface:USB, or RS232

Fixed barcode scanner



F50-M1R



- Symbologies: 1D&2D
- Resolution: 640*480
- Dimensions: 45* 37 * 18mm
- Depth of field range: 50-330mm (EAN-13,13mil 13 Byte)
- Aiming: Red LED
- Illumination: Red light 625nm
- Data Interface:USB, or RS232



F50-70P



- Symbologies: 1D&2D
- Resolution: 1280*800
- Dimensions: 45* 37 * 18mm
- Depth of field range: 50-720mm (EAN-13,13mil 13 Byte)
- LED Aiming: laser
- lighting: White LED
- Data Interface:USB, or RS232



F50-ER



- Symbologies: 1D&2D
- Resolution: 1280*800
- Dimensions: 45* 37 * 18mm
- Depth of field range: 105-680mm (EAN-13,13mil 13 Byte)
- LED Aiming: laser
- Illumination: White LED
- Data Interface:USB, or RS232



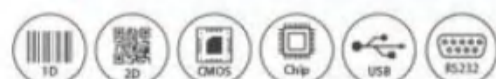
F51-13



- laser: 630-650nm
- Resolution: 1280*800
- Dimensions: 52.1* 45 * 25mm
- Depth of field range: 52-457mm (EAN-13,13mil 13 Byte)
- Scan Rate: 108 ± 16 scans/sec
- Classification: CDRH Class II/IEC Class 2
- Quick Scan in medical field



F51-35



- Symbologies: 1D&2D OCR
- Resolution: 1280*800
- Dimensions: 52.1* 45.2 * 25.5mm
- Depth of field range: 70-500mm (EAN-13,13mil 13 Byte)
- Aiming: laser
- Illumination: White LED
- Data Interface:USB, or RS232



F51-DP



- Symbologies: 1D&2D,DPM
- Resolution: 1280*1024
- Dimensions: 52.1* 45.2 * 25.5mm
- Depth of field range: 45-80mm (Code 39,3mil)
- Aiming: Red LED
- Illumination: White LED
- Data Interface:USB, or RS232

Portable Data Collector



M71

- CUP: MTK6761,4xA53@ 2.0GHz
- OS: Android 11.0
- Memory: 3GB RAM+32GB ROM
- Display : 4 inches,resolution 800*480 pixels
- Battery: 5000mAh
- Scanner: 1D&2D
- Communication: 2G, 3G, 4G



M72

- CUP: MTK6762
- OS: Android 11.0
- Memory: RAM 4G + ROM 64GB
- Display : 4 inches,resolution 800*480 pixels
- Battery: 5000mAh
- Scanner: 1D&2D
- Communication: 2G, 3G, 4G



M73-LH

- MT6769 eight core 64 bit 2.0GHz high-performance processor (2 ARM) ® Cortex-A75 core+6An ARM ® Cortex-A55 Core
- OS: Android 13
- Memory: 6GB+64GB
- Display : 4.2-inch IPS screen, resolution 720x1280
- Battery:Rechargeable polymer battery 3.8V 5200mAh
- Communication: 2G, 3G, 4G



M80

- CUP: MT6762V/CA(Octa-core, 2.0GHz)
- OS: Android 14
- Memory: 64 GB ROM+4 GB RAM(Standard)
- Display : 5.45 inches,720*1440 resolution 720*1440 pixels
- Battery: 5000mAh
- Scanner: 1D&2D
- Communication: 2G, 3G, 4G



M81

- CUP: MTK6762 eight nuclear
- OS: Android 12
- Memory: 4GB RAM+64GB ROM
- Display : 6.217 inch 720*1520
- Battery: 5000mAh g
- Scanner: 1D&2D
- Communication: 2G, 3G, 4G



M82

- CUP: MTK MT6877
- OS: Android 12
- Memory: 6GB(RAM)+ 128GB(ROM)
- Display : 6.217 inch 720*1520
- Battery: 5000mAh g
- Scanner: 1D&2D
- Communication: 2G, 3G, 4G,5G

Portable Data Collector



M70

- OS: Android 9
- Memory: 2GB+16GB
- Battery capacity: 4000mAh, detachable
No RFID battery
- IP Protection Grade : IP65
- Platform: 4 cores 12nm main frequency 2.0GHz
- Scanner: 1D&2D
- Communication: 4G



M63

- OS: Android 14
- Memory: 32GB/64GB
- Battery capacity: 5000 mAh, replaceable
- IP Protection Grade : IP65
- Platform: 4-inch, resolution 800 * 480, IPSGFF capacitive screen, multi touch
- Scanner: 1D&2D
- Communication: 2G/3G/4G full network connectivity



M73-UHF

- OS: Android 10.0
- Memory: 2GB+16GB / 4GB+64GB
- CPU: MT6762 octa-core 64-bit 2.0GHz high-performance processor
- IP Protection Grade : IP65
- Operating Frequency: 13.56MHz
- Scanner: 1D&2D
- Communication: 2G,3G,4G



M86

- OS: Android 12
- Memory: 4GB RAM+ 64GB ROM6GB+128GB optional (minimum order of 100 units) 6GB+128GB optional (minimum order of 100 PCS)
- Processor: MTK6765 Eight Core 2.0GHz Main frequency
- IP Protection Grade : IP66
- Operating Frequency: 13.56MHz
- Communication: 4G

Portable Data Collector



M83-UHF

- CUP: MTK 6762
- OS: Android 12
- Memory: 3GB+32GB (optional 4g+64GB)
- Display : 5.7 inch 1280*720
- Battery: 10000mAh
- Scanner: 1D&2D
- Communication: 2G, 3G, 4G,



M90

- CUP: MTK T900
- OS: Android 12
- Memory: 4GB RAM+64GB ROM
- Display : 5.7 inch 1440*720
- Battery: 4000mAh
- Scanner: 1D&2D
- Communication: 2G, 3G, 4G, 5G



M91

- CUP: MTK6762
- OS: Android 12
- Memory: 4GB RAM+64GB ROM
- Display : 5.7-inch ,720*1440
- Battery: 4000mAh
- Scanner: 1D&2D
- Communication: 2G, 3G, 4G



M93-LH

- CUP: MT6769 octa-core 64-bit 2.0GHz high-performance processor (2ARM®Cortex-A75 cores +6 ARM®Cortex-A55 cores)
- OS: Android 13
- Memory: 6GB+64GB(DDR4)
- Display : 5.5-inch IPS screen with 720x1440 resolution
- Communication: 2G, 3G, 4G



M95

- CUP:MTK:Octa Core 2GHQualcomm:Octa Core 2.8GHz
- OS: Android 14
- Memory: RAM:LPDDR4X,4GB/6GB Flash: UFS,64GB/128GB
- Display : IPS,6",HD Incell, Glove, Wet
- Battery: 5000 mAh,Replaceable
- Communication:MTK:802.11.a/b/g/n/ac,5G FEM
Qualcomm: Wi-Fi 6-ready,802.11.a/b/g/n/ac/ax,5G FEM



M98

- CUP: Processor MTK6877 (octa-core processor, 2*2.4GHz; 6*2.0GHz)
- OS: Android 12.0
- Memory: 128 GB ROM + 8GB RAM (optional higher)
- Display : 6 inches, HD+ 1080*2160
- Battery: 5000mAh
- Communication: 2G, 3G, 4G

Portable Data Collector



P800

- CUP: MTK6762-8core
- OS: Android 12
- Memory: 3GB RAM+32GB ROM (Standard)
- Battery: 10000mAh
- Display : 8.0 inch screen
- Scanner: 1D&2D
- Communication: 2G, 3G, 4G



P1000

- CUP: MTK6762 -8core
- OS: Android 12
- Memory: 3GB+32GB(optional 4GB+64GB)
- Display: 10.1 inch screen720*1280;; Customizable: 1920*1200
- Scanner: 1D&2D
- Communication: 2G, 3G, 4G



P1020

- CUP: UNISOC7863(T616),2.0Ghz
- OS: Android 12
- Memory: 6GB (RAM) +128GB (ROM)
- Display: 10.1" 1200*1920 FHD
- Battery: Li-lon 8500mAh
- Scanner: 1D&2D
- Communication: 2G, 3G, 4G



P105G

- CUP: MTK6891
- OS: Android 12
- Memory: 6GB(RAM)+128GB(ROM)
- Display : 10.1"1200*1920 FHD
- Battery: li-lon 10000mAh
- Scanner: 1D&2D
- Communication: 2G, 3G, 4G, 5G



VS50

- CUP: ARM Contex-A53 2.0GHZ
- OS: Android 12
- Memory: RAM 2G + ROM16GB
- Display : (5.45")resolution 720X1440dots
- Battery: 7.6V2500mAh
- Scanner: 1D&2D
- Communication: 2G, 3G, 4G



VS520

- CUP: MT6739WA
- OS: Android 11
- Memory: 4GB RAM+64GB ROM
- Display : 720*1280
- Battery: 7.6V2500mAh
- Scanner: 1D&2D
- Communication: 2G, 3G, 4G

Portable Data Collector



EP600

- CUP: ARM Cortex-A53 @ 2.0GHZ
- OS: Android 12
- Memory: 2GB RAM+16GB ROM
- Display: 6.217 inch TFT(IPS)
- Battery : 7.6V3100mAh
- Scanner: 1D&2D
- Communication: 2G, 3G, 4G



VS580

- CUP: High performance CPU processor 64bit/ octa-core/2.0 GHz
- OS: Android 14
- Memory: 4GB+64GB SD/TF card slot (expandable up to 128GB)
- Display: 5.5-inch resolution 1440 * 720
- Battery : 7.6V/2750mAh
- Communication: 2G, 3G, 4G



P1006

- CUP: 2G DDR3
- OS: RK3566
- RAM+ROM: 16G SSD 10 Point capacitive touch screen
- Data acquisition type: RFID function, fingerprint, biometrics
- Battery : 3.7V/8000mAh
- Scanner: 1D&2D
- Communication: 2G, 3G, 4G



P1010

- CUP: ARM Cortex-A53 @ 2.0GHZ
- OS: Android 11
- Memory: 2GB RAM+16GB ROM
- Display: 10.1" (1280*800)
- Battery : 12V 3A round hole power adaptor
- Scanner: 1D&2D
- Communication: WIFI,2.4G (5.0G for option)

打印机

Printer



ED803B

- Print Speed: 80 millimeters per second
- 80 millimeters per second: Direct line thermal sensing
- resolution: 203dots/line
- Paper width : 58 mm
- input buffer: 128k bytes
- Scanner: 1D&2D
- Communication: USB+BT/USB+WIFI



ED804B

- Printing method: Direct line thermal sensing
- resolution: 203dots/line
- Print Width: 72 mm (default)
- Print Speed: Maximum 100 millimeters per second
- input buffer: 256k bytes
- Scanner: 1D&2D
- Communication: USB+BT/USB+WIFI



ED5801

- Print Method: Direct Thermal
- Resolution: 384dots/line
- printing Width: 48mm
- Paper Type: Thermal Receipt paper
- Dimensions:155(D)x144(W)x86(H)mm
- diameter:Max.045mm
- SDK:Android/ios



ED310

- Printing method: Direct Thermal
- Resolution: 203dpi(8dots/mm)
- Printing Width: 72mm
- Paper Type: Thermal Receipt Paper
- Dimensions: 193.5(D)x145(W)x135(H)mm
- Weight: 1.8kgGross weight: 22.08kg/ctn
- Power Supply: 100V-240V 50/60HZ



ED808

- Print Method: Direct Thermal
- Resolution: 576dots/line or 572dots/line
- Printing Width: 72mm
- Paper Type: Thermal Receipt Paper
- Dimensions: 196(D)x143(W)x129(H)mm
- Weight: Net weight: 2.2kg Gross weight:24.8kg/ctn
- Power Supply: Windows XP /Vista/ Win7/Win8/ Win10/Win11/Win 2000/Win CE/OPOS/JPOS



ED200

- Print Method: Direct thermal sensing
- resolution: 203 points/inch (8 points/mm)
- printing speed: Max180 mm/SEC
- print span: 80 mm
- print length: 25mm - 300mm
- Paper roll diameter: 5 inches (127 mm)

Printer



ED1080

- Project: Parameters
- Printing Method: Line Thermal
- Flash: 2Mb (Usb Version); 4mb (Bluetooth Version)
- Connection Method: Usb/Usb+Bluetooth (Wifi Can Be Customized)
- Adapter : 24v/2.5a
- Resolution: 203dpi; Optional 300dpi



ED200

- Print Method: Direct thermal sensing
- resolution: 203 points/inch (8 points/mm)
- printing speed: Max180 mm/SEC
- print length: 25mm - 300mm
- CPU: 32 position RISC CPU
- Paper roll diameter: 5 inches (127 mm)
- Core inner diameter: 1 inch (25.4 mm).1.5 inch (38.1 mm)



ED809

- Print width: 72mm
- Resolution: 203dpi
- printing speed: 200mm/S
- Print density: 576 dots/line or 384 dots/line
- Battery : 3.7V/8000mAh
- Paper loading method: Easy paper loading structure
- weight: 0.768kg



ED-M8

- Printing method: Thermal
- Print command: ESC/POS
- Print Interface: Bluetooth + USB
- Paper Support: Tattoo Transfer Paper
- Printhead Life : 50KM
- li-ion battery: 1500mAh
- Maximum paper width: 217mm

Industrial intelligent products



ED2000



- Symbologies: 1D&2D
- Resolution: 0.4MP~1.6MP
- Dimensions: 160*95*65mm
- Ingress protection: IP54/IP65
- Temperature: -20°C~50°C
- Data Interface: USB, RS232, and TCP/IP



ED3000



- Symbologies: 1D&2D
- Resolution: 1.3MP~4.2MP
- Dimensions: 65.2*65.2*42mm
- Ingress protection: IP67
- Temperature: -0°C~50°C
- Data Interface: USB, RS232, and TCP/IP



ED5000



- Symbologies: 1D&2D
- Resolution: 5.0MP~20MP
- Dimensions: 118.7*78*73.2mm
- Ingress protection: IP67
- Temperature: -0°C~50°C
- Data Interface: USB, RS232, and TCP/IP
- External light source



EDH2000/B



- Symbologies: 1D&2D
- Resolution: 0.3~1.3
- Dimensions: 66.5*94*169.5mm
- Ingress protection: IP42
- Wire or Wireless
- Data Interface: USB



EDH3000/B



- Symbologies: 1D&2D
- Resolution: 1280~1024
- Dimensions: 74.4*86.6*190.2mm
- Ingress protection: IP42
- Wire or Wireless
- Data Interface: USB, RS232, and TCP/IP



EDH7000/B



- Symbologies: 1D&2D
- Resolution: 1280~800
- Dimensions: 73.4*104*215.2mm
- Ingress protection: IP65
- Wire or Wireless
- Data Interface: USB, RS232, and TCP/IP
- Tricolor supplementary light

Barcode scanning platform



D61



- Symbologies: 1D&2D
- Resolution: 1280*800
- Depth of fied range: 0-150mm (EAN-13,13mil 13 Byte)
- Field Angle: 60° (H) ,41° (V)
- Temperature: -20°C~50°C
- Data Interface: USB, or RS232



D42Z



- Symbologies: 1D&2D
- Resolution: 640*480
- Depth of fied range: 10-90mm (QR Code,15mil)
- Field Angle: 68° (H) ,54° (V)
- Temperature: -20°C~60°C
- Data Interface: USB, or RS232



D45



- Symbologies: 1D&2D
- Resolution: 640*480
- Depth of fied range: 0-100mm (EAN-13,13mil 13 Byte)
- Field Angle: 44° (H) ,34° (V)
- Temperature: -20°C~60°C
- Data Interface: USB, or RS232



D40-21



- Symbologies: 1D&2D
- Resolution: 640*480
- Depth of fied range: 25-110mm (EAN-13,13mil 13 Byte)
- Field Angle: 68° (H) ,51° (V)
- Temperature: -20°C~60°C
- Data Interface: USB, or RS232



D41-21



- Symbologies: 1D&2D
- Resolution: 640*480
- Depth of fied range: 0-160mm (EAN-13,13mil 13 Byte)
- Field Angle: 68° (H) ,51° (V)
- Temperature: -20°C~55°C
- Data Interface: USB, or RS232



D20-60



- Symbologies: 1D&2D
- Resolution: 640*480
- Depth of fied range: 0-150mm (EAN-13,13mil 13 Byte)
- Field Angle: 44° (H) ,26° (V)
- Temperature: -20°C~50°C
- Data Interface: USB, or RS232

New retail series products



ED60

- CPU: Intel® Celeron® Processor J4125 (4M Cache, up to 2.70 GHz)
- RAM: 4G+128G
- Touch Panel: 10 point capacitive touch panel
- main screen: 15.6
- wireless Optional: WIFI Bluetooth
- Weight: One screen 4KG
- All parameters are optional and customizable



ED-115



- CPU: A133 Quad-Core Arm Cortex-A53, up to 1.7GHz
- RAM: 4G+64G
- Else: Built in WiFi, speaker
- main screen: 15.6-inch touch LCD screen resolution 1920 × 1080 11.6Inch LCD screen resolution 1366 × 768
- wireless Optional: WIFI Bluetooth
- All parameters are optional and customizable



ED-225



- CPU: Inter i5
- RAM: 8G+128G
- Touch Panel: 10 point capacitive touch panel
- main screen: 15.6-inch touch LCD screen with a resolution of 1920×1080. 11.6-inch LCD screen with a resolution of 1366×768.
- Print: Embedded 58mm thermal printing
- All parameters are optional and customizable



ED-235



- CPU: Inter i5
- RAM: 8G+128G
- Touch Panel: 15.6-inch touch LCD screen, resolution 1920×1080, 11.6 Inch-sized LCD screen Resolution: 1366×768.
- Print: Embedded 58mm thermal printing
- Weight: Net weight 6kg
- All parameters are optional and customizable

Medical drug scanner



ED2X



- Dimensions: 45*43*25mm
- Ingress protection: IP54
- Temperature: -20°C~50°C
- Data Interface: USB, HID-KBW
- Data Interface: Report the number of drug boxes per item
- Data Interface: Can recognize 30 barcodes



ED3X



- Dimensions: 65.2*65.2*47mm
- Ingress protection: IP67
- Temperature: 0°C~50°C
- Data Interface: USB, HID-KBW
- Data Interface: Report the number of drug boxes per item
- Data Interface: 84 codes per second



ED5X



- Resolution: 500W,2880*1620
- Depth of Field Ranges: 150mm-550mm @8mil code128
- Data Interface: 435mm*246mm @450mm
435mm * 246mm @ 450mm installation distance
- Data Interface: Report the number of drug boxes per item
- Data Interface: RS232, Tcpip



2XU



- chassis: 340mm
- height: 460mm
- view: 300*230*400
- When scanning, it automatically announces the quantity of each medicine box to ensure no missed scans; the volume can be adjusted.
- Data Interface: USB



3XU



- chassis: 340mm
- height: 460mm
- view: 400*350*500
- When scanning, it automatically announces the quantity of each medicine box to ensure no missed scans; the volume can be adjusted.
- Data Interface: USB



5XU



- chassis: 200mm
- height: 46mm
- view: 340*240*450
- When scanning, it automatically announces the quantity of each medicine box to ensure no missed scans; the volume can be adjusted.
- Data Interface: RS232, USB HID keyboard, USB virtual serial port, network

Medical drug scanner



5BU



- chassis: 34mm
- height: 46mm
- view: 340*240*450
- When scanning, it automatically announces the quantity of each medicine box to ensure no missed scans; the volume can be adjusted.
- Data Interface: RS232, USB HID keyboard, USB virtual serial port, network

OEM Scan Engine



M0V2



- Symbologies: 1D&2D
- Resolution: 640*480
- Illumination: White LED
- Aiming: Red LED
- Dimensions: 21.5*8.5*7.1mm
- Depth of field range: 60-320mm (EAN-13,13mil 13 Byte)
- Operation Current:DC3.3V/140mA



M1V2



- Symbologies: 1D&2D
- Resolution: 640*480
- Illumination: White LED
- Aiming: Red LED
- Dimensions: 21.5*8.8*7.1mm
- Depth of field range: 50-330mm (EAN-13,13mil 13 Byte)
- Operation Current:DC 3.3V/140mA



M1-RV2



- Symbologies: 1D&2D
- Resolution: 640*480
- Illumination: Red LED
- Aiming: Red LED
- Dimensions: 21*9*7.1mm
- Depth of field range: 50-330mm (EAN-13,13mil 13 Byte)
- Operation Current:140mA



M2A



- Symbologies: 1D&2D
- Resolution: 640*480
- Illumination: Warm white light
- Aiming: Laser
- Dimensions: 23*6.9*10.6mm
- Depth of field range: 55-350mm (EAN-13,13mil 13 Byte)
- Operation Current:DC3.3V/135mA



M1W



- Symbologies: 1D&2D
- Resolution: 640*480
- Illumination: Red LED
- Aiming: Red LED
- Dimensions: 21.5mm*8.5mm*7.1mm
- Depth of field range: 40-170mm (EAN-13,13mil 13 Byte)
- Operation Current:140mA



MB23



- Symbologies: 1D&2D
- Resolution: 640*480
- Illumination: White LED
- Dimensions: 21.5mm*8.8mm*7.0mm
- Depth of field range: 10-90mm (QR Code,15mil)
- Operation Current:160mA

OEM Scan Engine



ME11



- Symbologies: 1D&2D
- Resolution: 640*480
- Illumination: White LED
- Aiming: Red LED
- Dimensions: 21.5*14.5*10mm
- Depth of field range: 40-300mm
(EAN-13,13mil 13 Byte)
- Operation Current:DC3.3V/150mA



ME11-W



- Symbologies: 1D&2D
- Resolution: 640*480
- Illumination: White LED
- Aiming: Red LED
- Dimensions: 21.5*14.5*10mm
- Depth of field range: 35-100mm
(EAN-13,13mil 13 Byte)
- Operation Current:DC3.3V/150mA



ME12



- Symbologies: 1D&2D
- Resolution: 640*480
- Illumination: White LED
- Aiming: Red LED
- Dimensions: 21.5*14.5*10mm
- Depth of field range: 45-300mm
(EAN-13,13mil 13 Byte)
- Operation Current:DC3.3V/150mA



ME22



- Symbologies: 1D&2D
- Resolution: 640*480
- Illumination: White LED
- Aiming: Red LED
- Dimensions: 21.5*8.5*7.0mm
- Depth of field range: 55-280mm
(EAN-13,13mil 13 Byte)
- Operation Current:DC3.3V/180mA



S70-F



- Symbologies: 1D&2D
- Resolution: 1280*800
- Illumination: White LED
- Aiming: Red LED
- Dimensions: 21.5*7*9.9mm
- Depth of field range: 50-600mm
(EAN-13,13mil 13 Byte)
- Operation Current:280mA



S70P-F



- Symbologies: 1D&2D
- Resolution: 1280*800
- Illumination: Red LED
- Aiming: laser
- Dimensions: 21.5*7*9.9mm
- Depth of field range: 50-720mm
(EAN-13,13mil 13 Byte)
- Operation Current:280mA

OEM Scan Engine



MF20-23-Z



- Symbologies: 1D&2D
- Resolution: 640*480
- Dimensions: 53.6*33.5*16.2mm
- Depth of field range: 10-90mm (QR Code, 15mil)
- Field Angle: 68°(H), 54°(V)
- Data Interface:USB、TTL232 or RS232
- Built-in buzzer



MF20-23-Z0



- Symbologies: 1D&2D
- Resolution: 640*480
- Dimensions: 53.6*33.5*16.2mm
- Depth of field range: 10-90mm (QR Code, 15mil)
- Field Angle: 68°(H), 54°(V)
- Data Interface:USB、TTL232 or RS232
- Built-in buzzer



MF21-23Z



- Symbologies: 1D&2D
- Resolution: 640*480
- Dimensions: 35.2*33.2*15.5mm
- Depth of field range: 10-90mm (QR Code, 15mil)
- Field Angle: 68°(H), 54°(V)
- Data Interface:USB、TTL232 or RS232
- Optional buzzer



MF22Z



- Symbologies: 1D&2D
- Resolution: 640*480
- Dimensions: 61.0* 64.8 * 23.1mm
- Depth of field range: 10-90mm (QR Code,15mil)
- Field Angle: 68°(H), 54°(V)
- Data Interface:USB、TTL232 or RS232
- Built-in buzzer



MF26P



- Symbologies: 1D&2D
- Resolution: 640*480
- Dimensions: 64.5* 60 * 30mm
- Depth of field range: 10-120mm (AEN-13,13mil 13 Byte)
- Field Angle: 62°(H), 48°(V)
- Data Interface:USB、TTL232 or RS232
- Built-in buzzer



MF31



- Symbologies: 1D&2D
- Resolution: 1280*800
- Dimensions: 65.0* 61.6 * 29.4mm
- Mobile payment: 250-1600mm
- Field Angle: 40°(H), 25°(V)
- Data Interface:USB、TTL232 or RS232 ,485
- Built-in buzzer

OEM Scan Engine



MF61



- Symbologies: 1D&2D
- Resolution: 1280*800
- Dimensions: 125*130*60mm
- Depth of field range: 0-150mm (EAN-13,13mil 13 Byte)
- Field Angle: 65.6°(H), 51°(V)
- Data Interface:USB、 or RS232
- Built-in buzzer



MF28-Y



- Symbologies: 1D&2D
- Resolution: 640*480
- Dimensions: 61*64.8*26mm
- Depth of field range: 10-100mm (EAN-13,13mil 13 Byte)
- Reading accuracy: 5mil
- Data Interface:USB/RS232/485/Wiegand
- NFC



FCR270

- Fully recognize mainstream IC cards
- Quickly read barcodes on paper, computer or mobile phone screens
- Support Wigan 26/34 RS232/485、 USB HID、 Multiple output protocols such as virtual serial port
- 300000 pixel CMOS sensor chip for image sensor
- Can achieve 360 degree reading of two-dimensional barcodes